

Description:

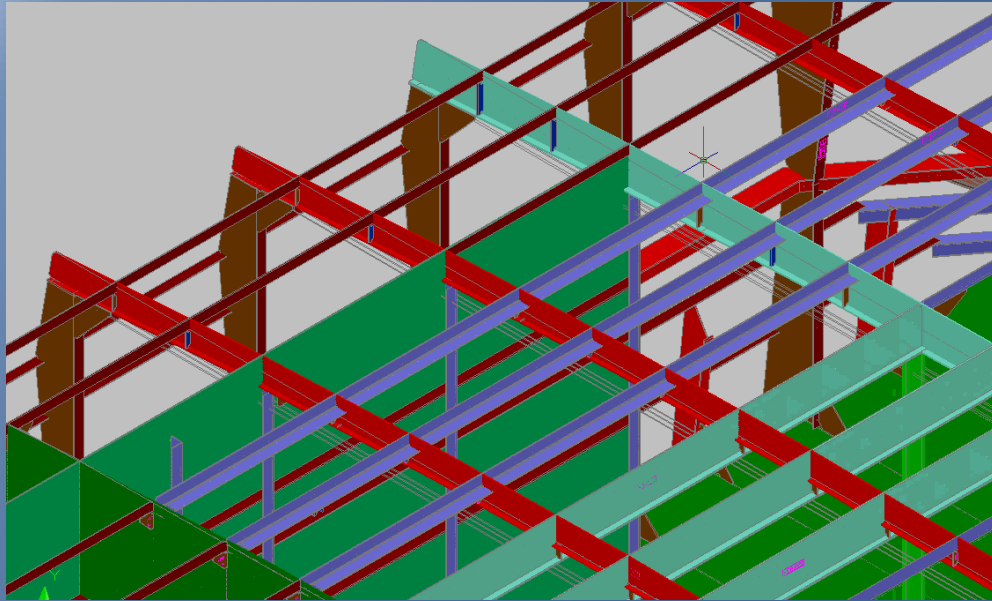
Patrol vessel for coastal operation
Designed with steel hull and aluminum superstructure.
All designs and analysis for Classification Society approval

- Structural Calculation For Crane Support, Max. Lifting Load 3900 Kg
- Propulsion System Vibration Analysis
- Structural Calculation Of Ship And Structural Drawings For Lloyd`s Register Approval
- Weight And Gravity Center Estimation
- Ship Stresses Analysis Using Finite Element Method
- Ship Global And Local Vibration Analysis
- Welding Booklet
- Acoustic design to reduce noise

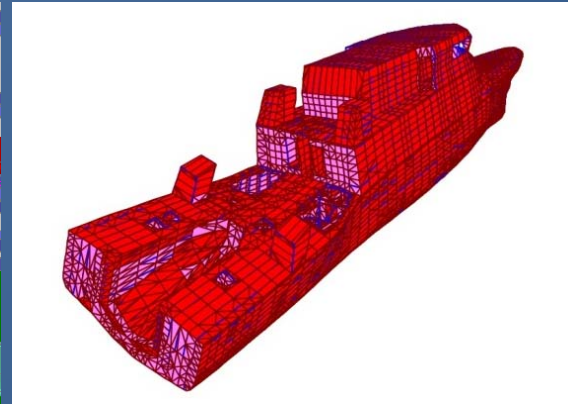
Main Features

Overall length	46.25	m
----------------	-------	---

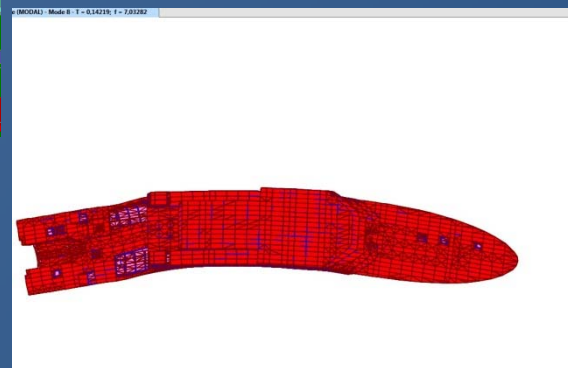
3D structural model



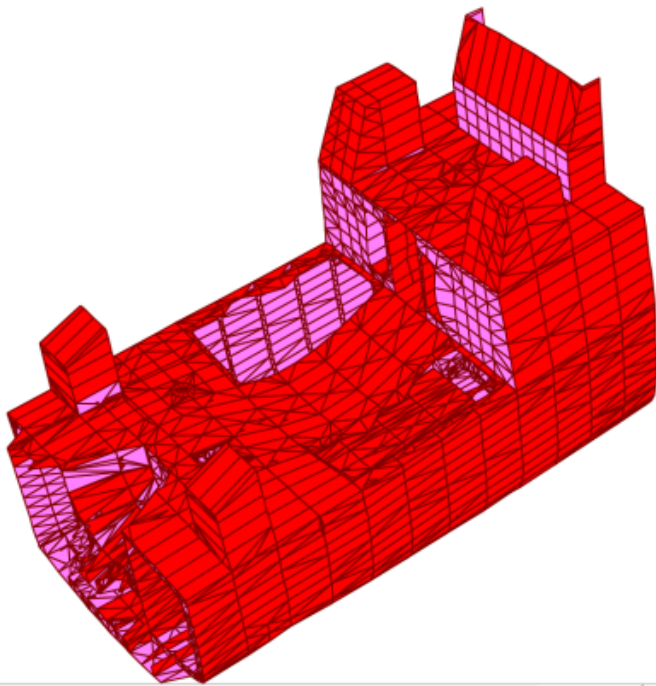
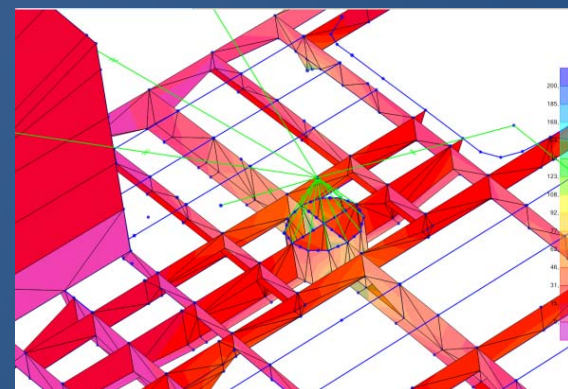
Hull natural vibration



Hull natural vibration



Crane support deign



Local vibration analysis

TECNAVIN S.A.

navser@gye.satnet.net

Phone: 593-4-2441022

593-9-84166936

Skype:

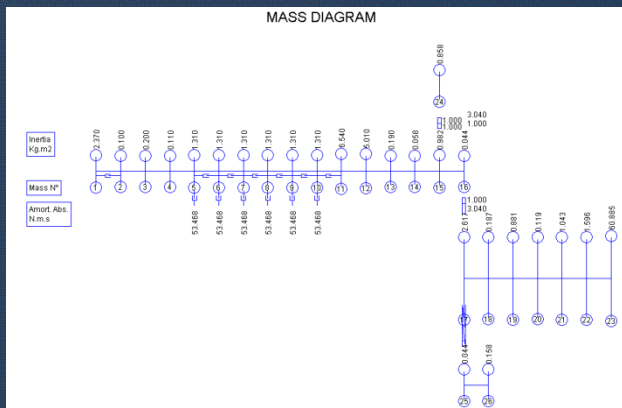
Franklin.johnny.dominguez.ruiz.1

Garcia Goyena 600 & Chimborazo

Guayaquil – Ecuador

www.tecnavin.com

MASS DIAGRAM



Torsional vibration model